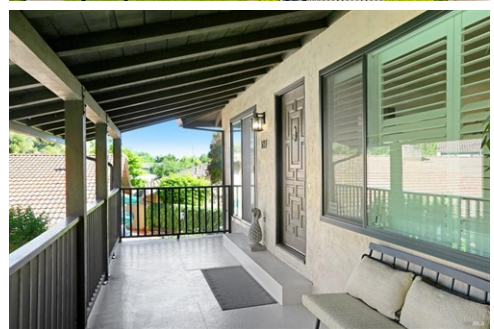




\$ 775,000



169 Guadalupe Dr, Sonoma, CA 95476

- » Beds: 2 | Baths: 1 Full, 1 Half
- » MLS #: 326030245
- » Condominium | 1,146 ft² | Lot: 993 ft²
- » More Info: 169GuadalupeDr.isforsale.com



Mary Szykowny
 (707) 290-9067 (Mobile)
 (707) 939-9500 (Office)
mary.sonoma@gmail.com
<http://www.maryZsonoma.com>

COMPASS
 135 W Napa St. Suite 200
 Sonoma, CA 95476
 (707) 290-9067

This exquisite top-floor residence, thoughtfully and extensively reimagined in 2024, embodies refined sophistication and timeless elegance in an unbeatable Eastside Sonoma location. Just moments from the historic Sonoma Plaza renowned for its fine dining, boutique shopping, and world-class wineries and with scenic hiking trails just beyond your doorstep, the setting offers the perfect blend of convenience and natural beauty. The gourmet kitchen is both stylish and functional, featuring a generous pantry, custom cabinetry, sleek quartz slab countertops, designer tile backsplash, and a suite of stainless steel appliances, including a gas range. Throughout the home, luxurious carpeting enhances the living spaces and bedrooms, while rich engineered wood flooring adds warmth and character to the kitchen and bedroom closets. The inviting living room is anchored by a gas-starter fireplace, creating a cozy ambiance for cool Sonoma evenings. Recent 2025 enhancements further elevate the home, including a new glass sliding door in the dining area, dual-pane windows throughout, added insulation, and thoughtfully designed custom closets in both bedrooms. Energy-efficient plantation shutters and recessed lighting contribute to both comfort and a sophisticated atmosphere. The primary suite offers a serene retreat with an ensuite half bath showcasing artisanal tile flooring and curated lighting. The hall bathroom features an elegant

